



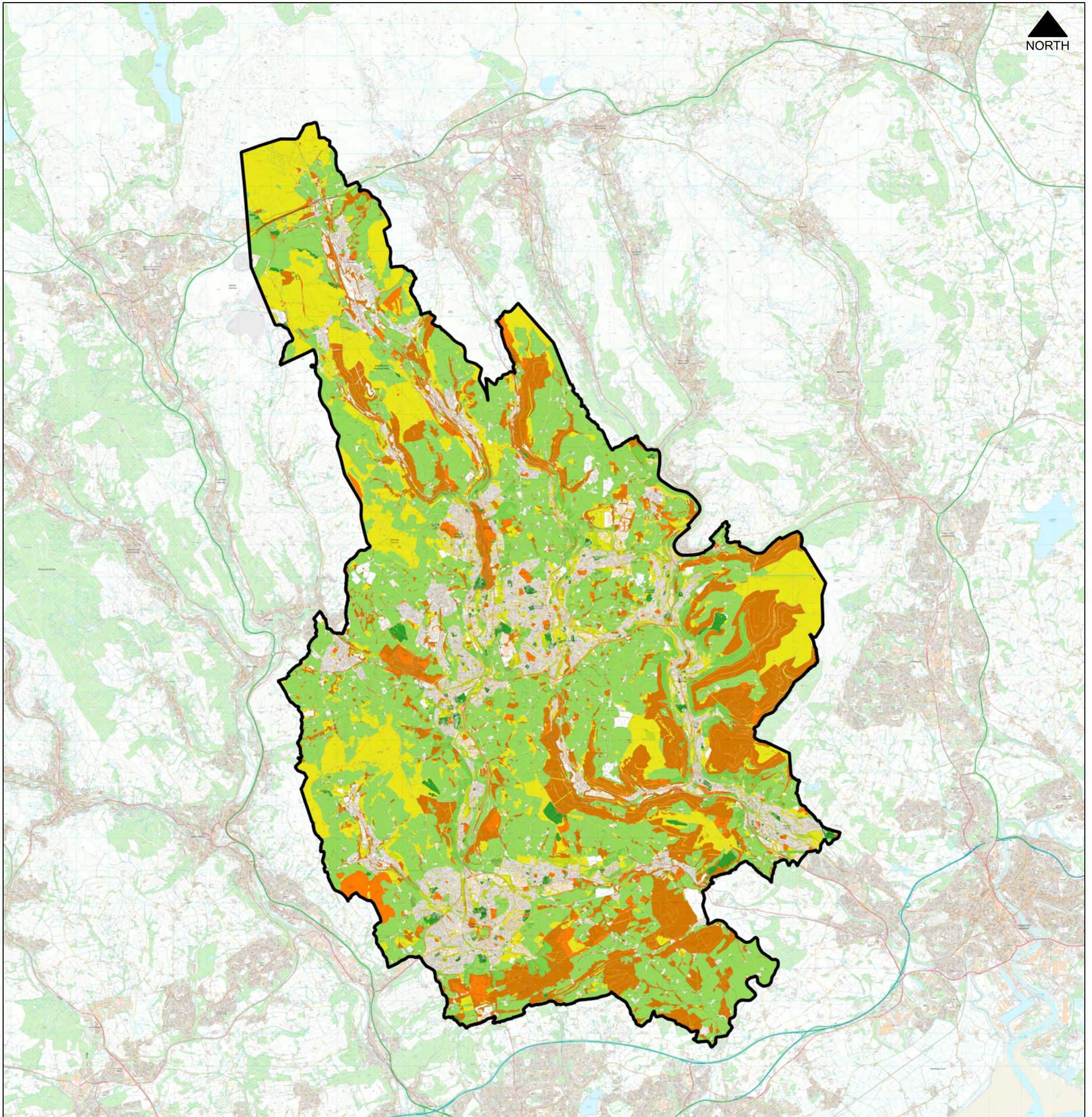
Caerphilly County Borough  
2nd Replacement  
Local Development Plan 2020-2035

**EB20.1 Green Infrastructure Assessment -  
Supporting Maps - Opportunities for  
Enhancement**

*January 2025*



GI8 - Strategic Overview of Green Infrastructure Opportunities for Enhancement



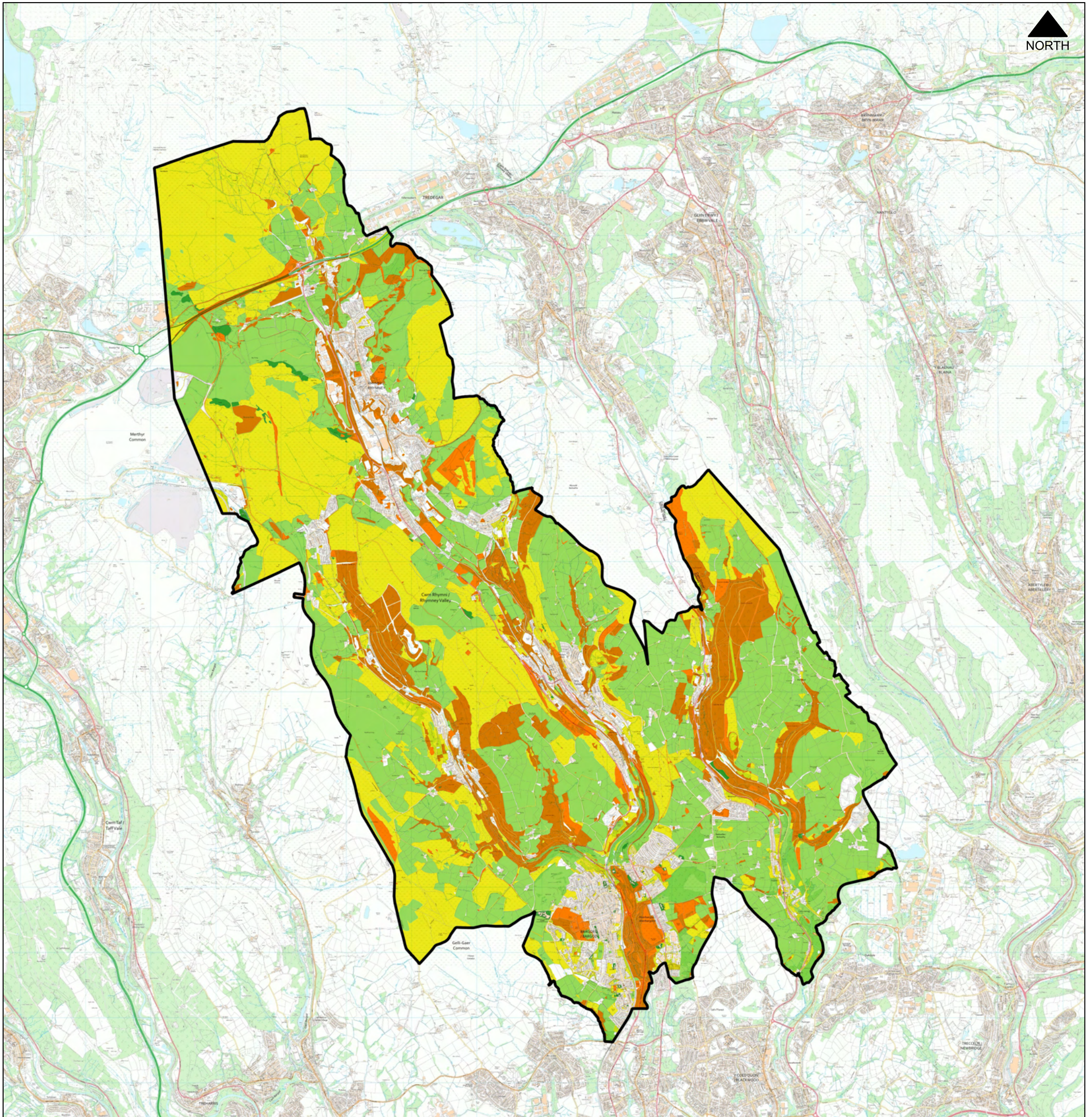
**Legend**

Caerphilly County Borough

**Potential for Enhancement**

- Very Low
- Low
- Medium
- High
- Very High

GI8.1 - Strategic Review of Opportunities for Enhancement within the Heads of the Valley Masterplan Area



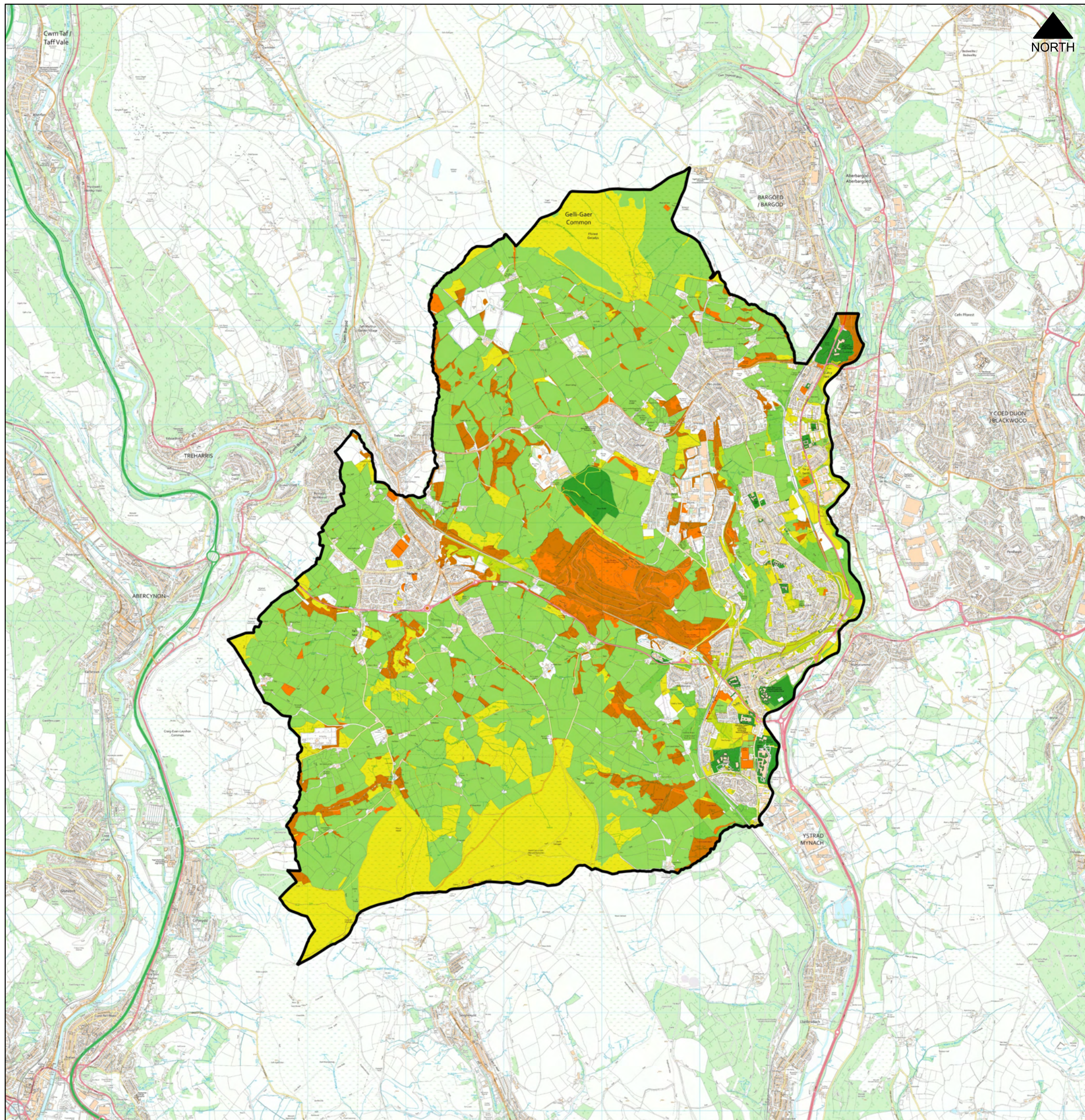
**Legend**

Masterplan Area

**Potential for Enhancement**

- Very Low
- Low
- Medium
- High
- Very High

GI8.2 - Strategic Review of Opportunities for Enhancement within the Ystrad Mynach Masterplan Area



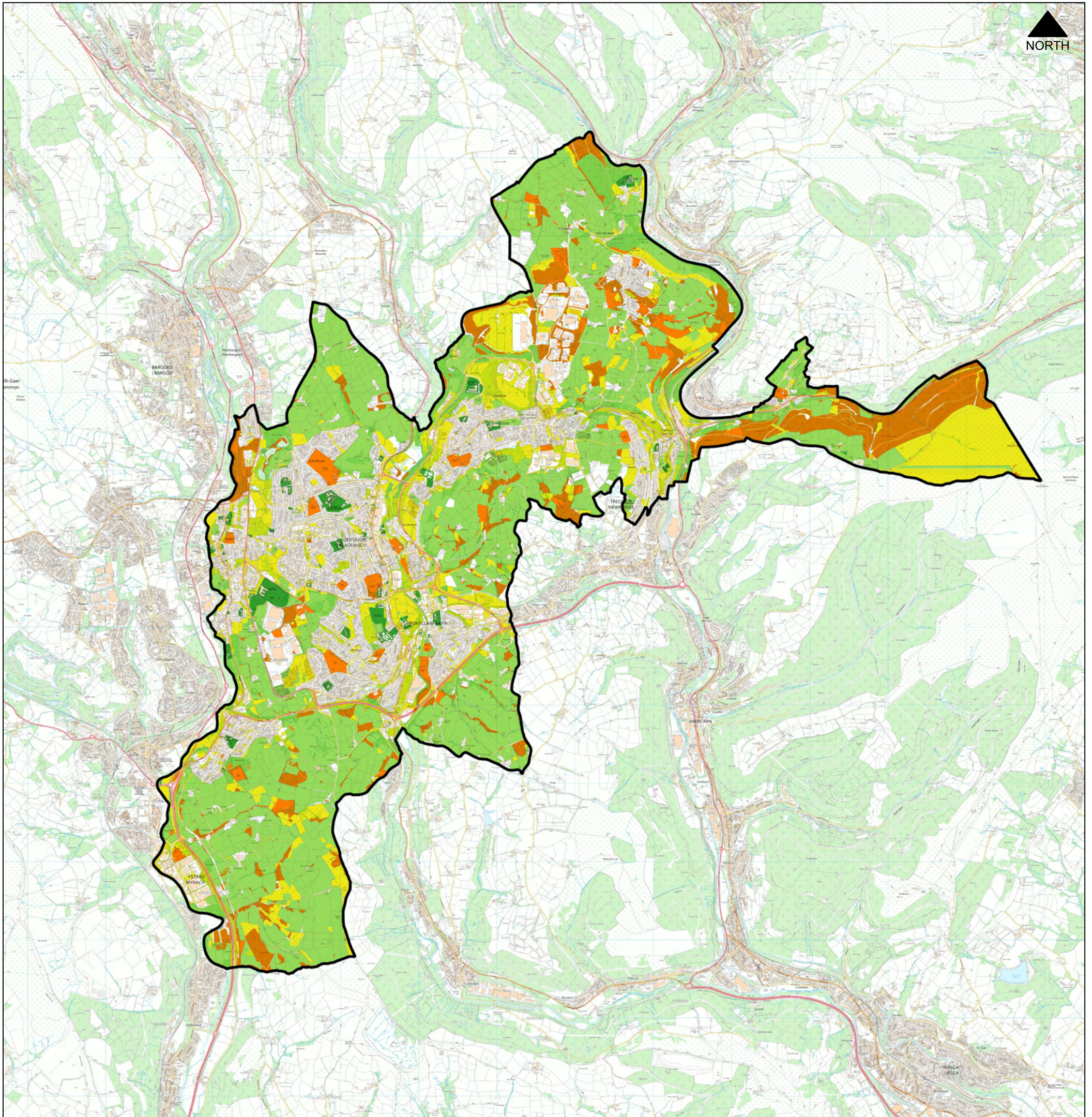
**Legend**

Masterplan Area

**Potential for Enhancement**

- Very Low
- Low
- Medium
- High
- Very High

GI8.3 - Strategic Review of Opportunities for Enhancement within the Greater Blackwood Masterplan Area



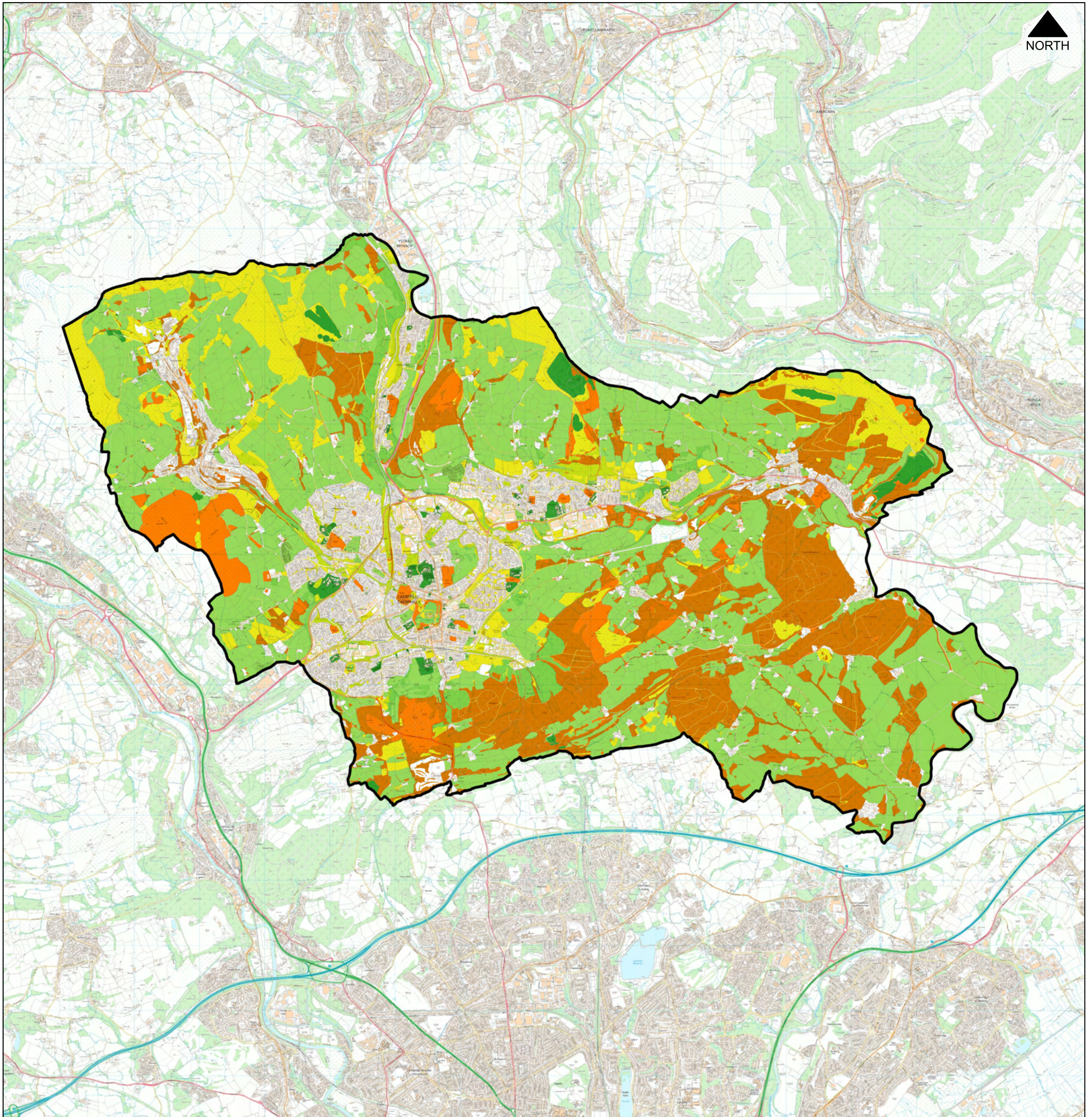
**Legend**

Masterplan Area

**Potential for Enhancement**

- Very Low
- Low
- Medium
- High
- Very High

GI8.4 - Strategic Review of Opportunities for Enhancement within the Caerphilly Basin Masterplan Area



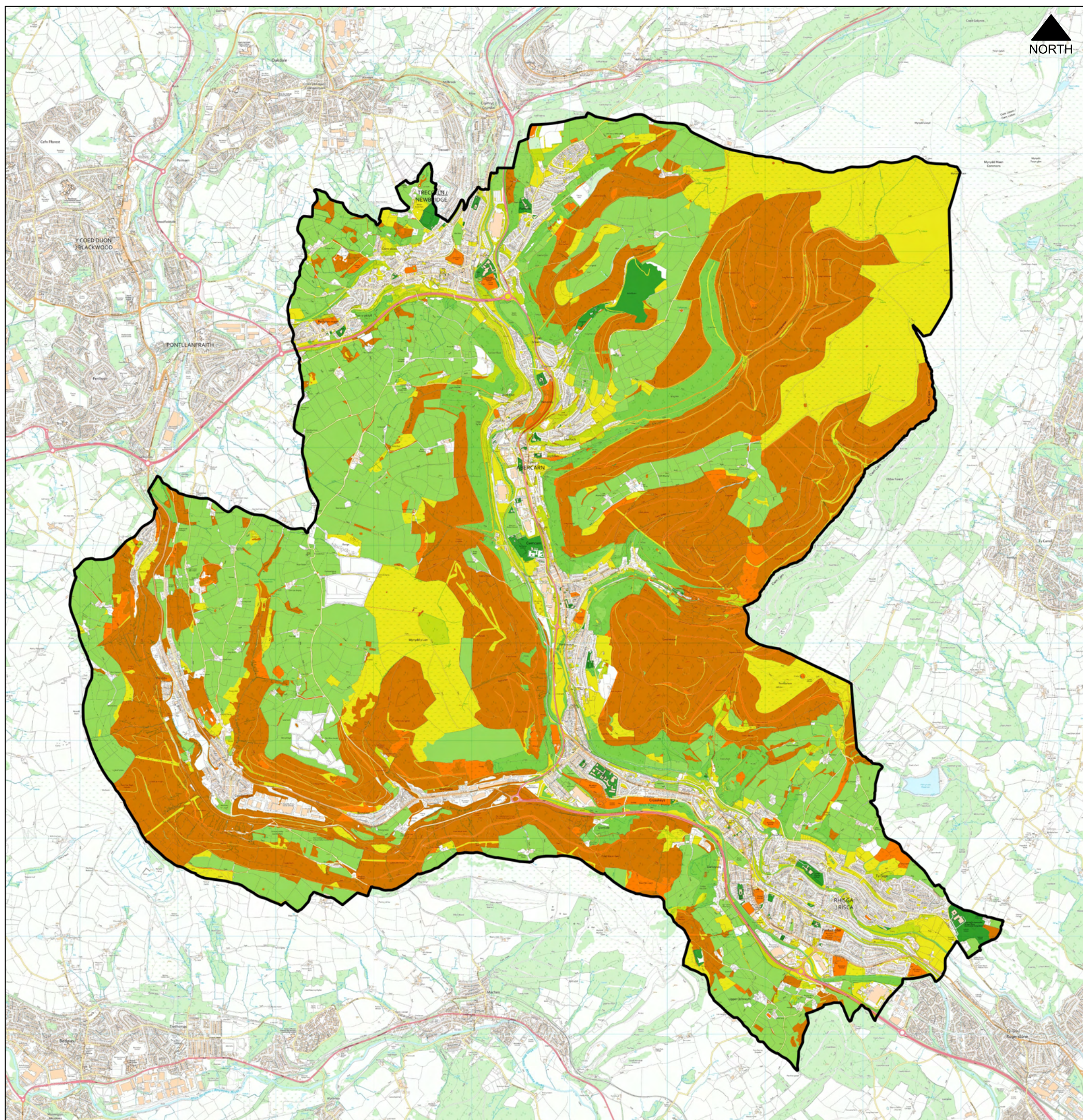
**Legend**

Masterplan Area

**Potential for Enhancement**

- Very Low
- Low
- Medium
- High
- Very High

GI8.5 - Strategic Review of Opportunities for Enhancement within the Lower Ebbw and Sirhowy Valleys Masterplan Area



**Legend**

Masterplan Area

**Potential for Enhancement**

- Very Low
- Low
- Medium
- High
- Very High